



# ADVANCED SMART UNDERWATER INSPECTION ROV



**HIGH PRECISION**

AR Intelligent Measurement/Distance Lock  
And Altitude Lock/Automatic Inspection

**FIFISH**  
UNDERWATER ROBOT

**VE PLUS**

Smart Underwater Inspection And Measurement Expert





# ADVANCED UNDERWATER INSPECTION EXPERT

Operate & Upgrade to the Industrial Level.

## FIFISH PRO V6 PLUS Smart And Easy To Operate

FIFISH PRO V6 PLUS is an expert in underwater advanced solution. Diving up to 150-meter, V6 Plus adopts the new patented Q-motor stabilization system and upgraded to the underwater intelligent system. More powerful and reliable in functions and simple in operation, FIFISH V6 Plus creates a new way of underwater operations.



## FIFISH PRO V6 PLUS FEATURES

**150m**

Max Depth

**3 Knots**

Max Speed

**-10~60°C**

Temp Range

**4 Hours**

Depend On Different Working Mode

### ■ Sonar Array System-Distance And Altitude Lock

The distance lock and altitude lock sonar system measure the forward distance and the downward altitude in real time. Through distance lock and altitude lock, the difficulty of operation is reduced, and various inspections are more efficient and accurate.



Distance lock



Altitude Lock



Smart collision avoidance



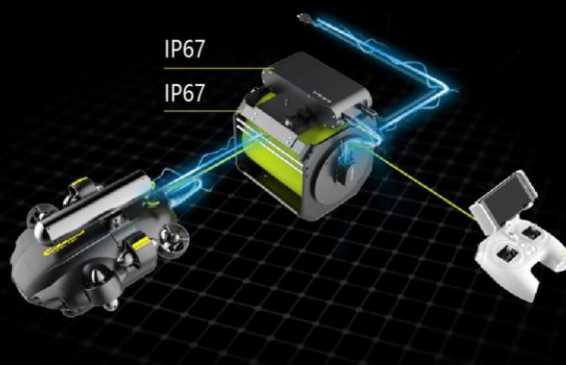
Terrain scan



### ■ Onshore Power Supply System

Patented six Q-motor power-saving design, miniaturized power supply system, Using while charging, super long battery life, fast replenishment, unlimited scenes, unlimited applications.

Safe and reliable, waterproof, anti leakage and anti electric shock design, excellent quality, worry-free operation.





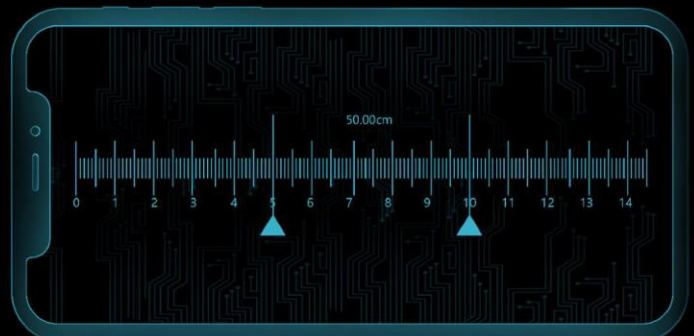
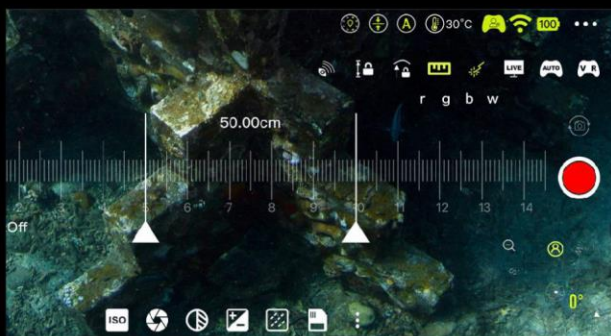
## ■ Underwater Quick Positioning System

FIFISH PRO V6 PLUS underwater quick positioning system (U-QPS) assists the pilot with the real-time location.



## ■ AR Scaler ( intelligent measurement )

QYSEA patent AR scaler's precision is up to 1cm. Self-adaptive measurement and visualized data are visible on FIFISH APP. By moving the scaler and customizing color of scaler, with one simple click you can save the measuring result.



## ■ Laser Scaler

High brightness laser, traditional reliable measurement.



## ■ A New Generation Of Q Motor Power System, Fully Upgraded

Using QYSEA Technology's "close loop enhanced stabilization algorithm", adaptively adjust the power curve according to the external interference environment, so that the ROV shooting image is more stable, just like an underwater gimbal. Install metal propeller, industrial quality and durable.



## ■ 4K Low Noise Shooting, 6000 Lumens High Brightness

6000 lumens super light, equipped with 4K ultra-high-definition camera lens, dark underwater bright as day, presenting high-definition image content.



166° FOV Wide-Angle Lens



240 frames per second in slow motion



4K UHD Camera



DNG Format



12MP



6000 lumen LED



5500K Color Temperature



Aperture F/2.5

## ■ VR Head Tracking

VR Head tracking intelligent technology is QYSEA patent design which can let user fully immersive into underwater world. With the Head Tracking feature, put yourself into the drone's first-person-view and control where you want to go simply by turning your head.



## ■ Easy To Follow, Free To Take

FIFISH PRO V6 PLUS has 6 degrees of freedom. Free like a fish, V6 Plus moves in all directions: 360° rotation, lateral and tilt. When moving in any direction, the posture lock can ensure the angle of the drone.



Omni-directional



Posture lock

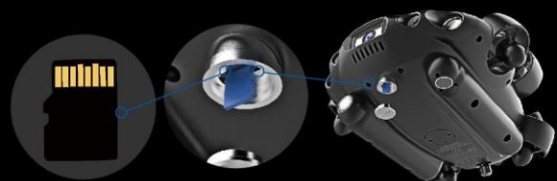


Depth lock



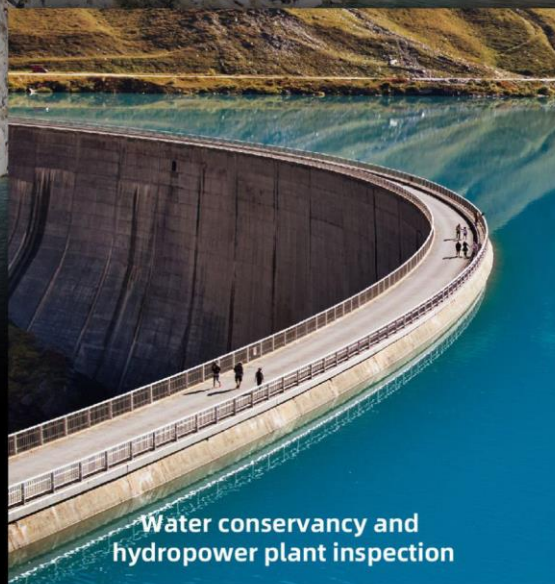
## ■ Quickly Data Transfer And Store

The SD card is removable, and all data is instantly exported. The SD card comes standard with 128GB, and can support up to 512GB.



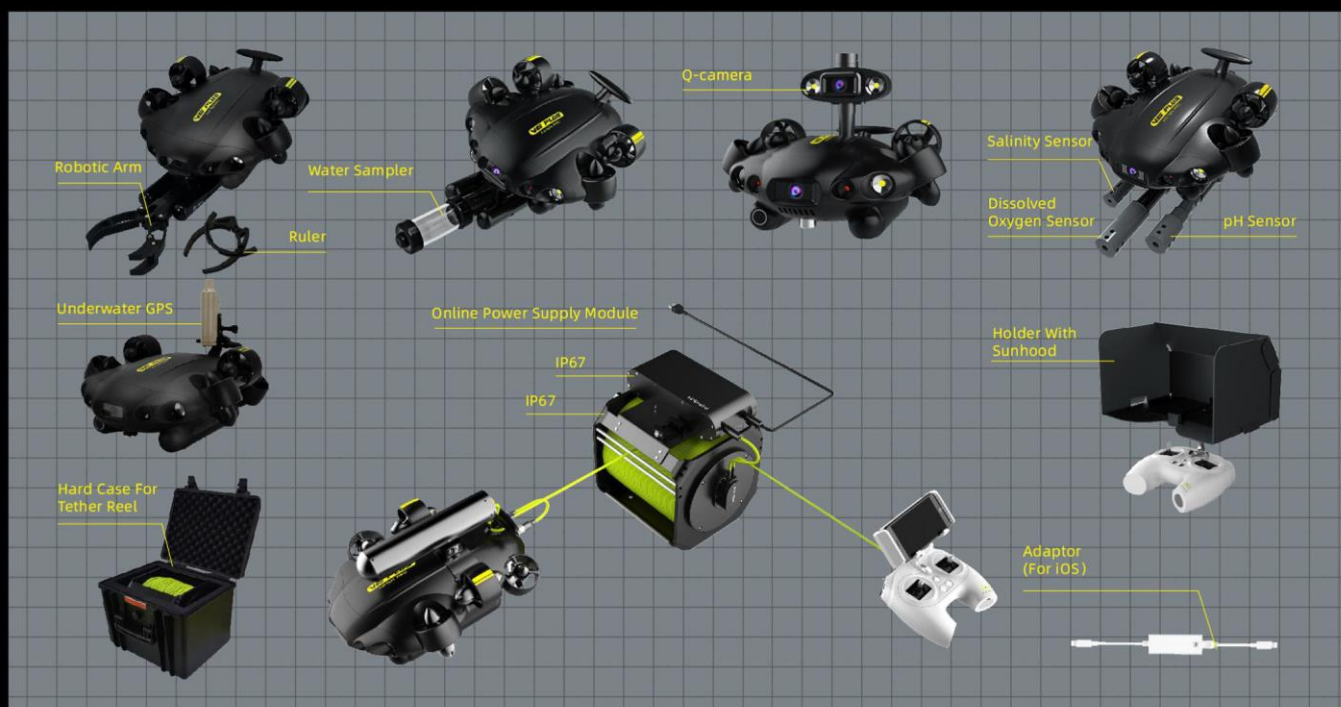
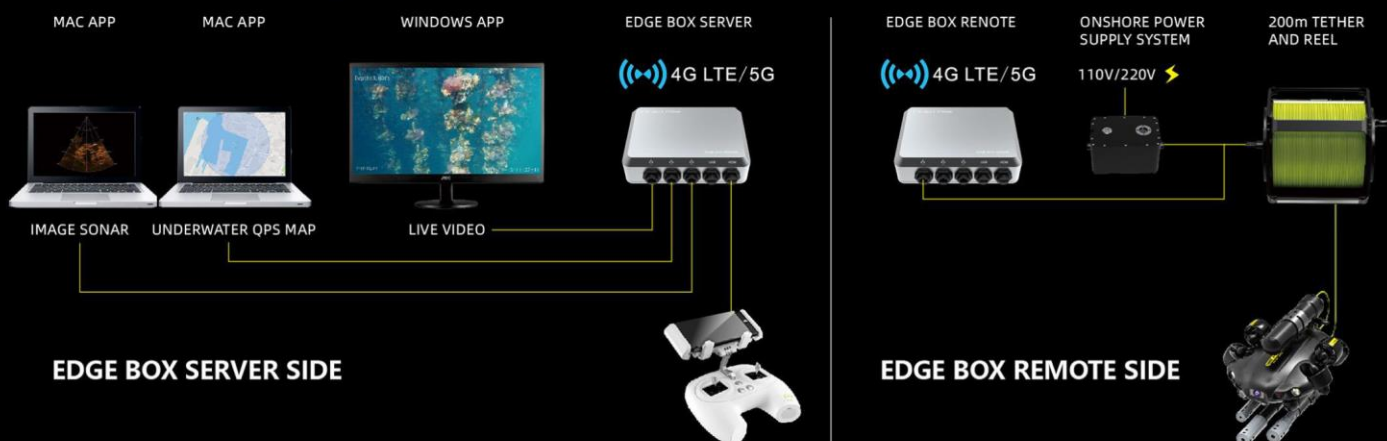


## ■ Application Scenarios



## ■ Accessories

### 4G LTE/5G Remote Control System



# FIFISH PRO V6 PLUS Specifications



## ■ ROV

Dimensions	383mm x 331mm x 158mm
Weight	5kg
Thrusters	6 Thrusters (FIFISH Q-Motor Technology)
Maneuverability	6 Degrees of Freedom
	Movement: left & right, up & down, forward & backward
	Rotation: 360° pitches, 360° rolls, 360° yaws
Posture Lock™	Lock the $\pm 0.1^\circ$ pitch or roll angle, in any direction
Hovering	Keep the ROV suspending in $\pm 1$ cm
Speed	Maximum 3 knots (1.5 m/s)
Depth Rating	150M
Temperature Range	-10 °C ~ 60 °C (14 °F ~ 140 °F)
Battery	Dive Time: 4-8 Hours (Depending on usage scenario)
	Rated Capacity: 14,400mAh / 156Wh
	1- Hour Quick Charge
	Charge Voltage: 12.6 V
Sensor	Li-ion Panasonic 21700
	Accelerometer, Gyroscope, Electronic Compass
	Temperature Transducer
	Depth Transducer

## ■ LED LIGHTS

Brightness	6000 Lumen LED
CCT	5500K (Correlated Color Temperature)
Beam Angle	120°
Levels	2 Brightness Levels

## ■ CHARGER

ROV	Input: 100-240V, 50/60 Hz, 3.0A MAX
	Output: 12.6V = 10A
RC	Input: 100-240V, 50/60Hz, 0.5A MAX
	Output: 5V = 3A

## ■ DISTANCE LOCK, ALTITUDE LOCK SONAR SYSTEM

Detection range	0.4 - 3m
Precision	+/-5cm

FIFISH V6 Plus Web Page: <https://www.qysea.com>

※Product specifications & accessories are subject to change without notice.

## ■ COMPONENT BREAKDOWN

## ■ CAMERA

Sensor	1/2.3" SONY CMOS
Pixels	12MP
ISO Range	100-6400 In Auto / Manual
Lens	Field of View: 166°
	Aperture: f/2.5
	Minimum Focusing Distance: 0.4 m
Shutter Speed	5~1/5000 Second
Burst Shooting	1 / 3 / 5 / 7 / 10 Frames
White Balance	2500K-8000K
Exposure Comp.	- 3.0 EV ~ + 3.0 EV
Photo Resolution	4:3: 4000 x 3000
Photo Format	JPEG, RAW (DNG)
Video Resolution	4K UHD: 25/30 fps
	1080P FHD: 25/30/50/60/100/120 fps
	720P HD: 25/30/50/60/100/120/200/240 fps
Video Format	MPEG4- AVC/H.264, HEVC/H.265
Stabilization	EIS (Electronic Image Stabilization)
Colour Encoding	NTSC & PAL
Storage	Pluggable, 128GB standard, support up to 512GB

## ■ CONTROLLER

Wireless	5GHz WiFi, 11a, n, ac
Battery Life	Up to 4 hours
SD Card Support	MicroSD Card FAT32 & EXFAT Format (to 128GB)
HDMI Output	QYSEA HDMI Output Box

## ■ ROBOTIC ARM (optional)

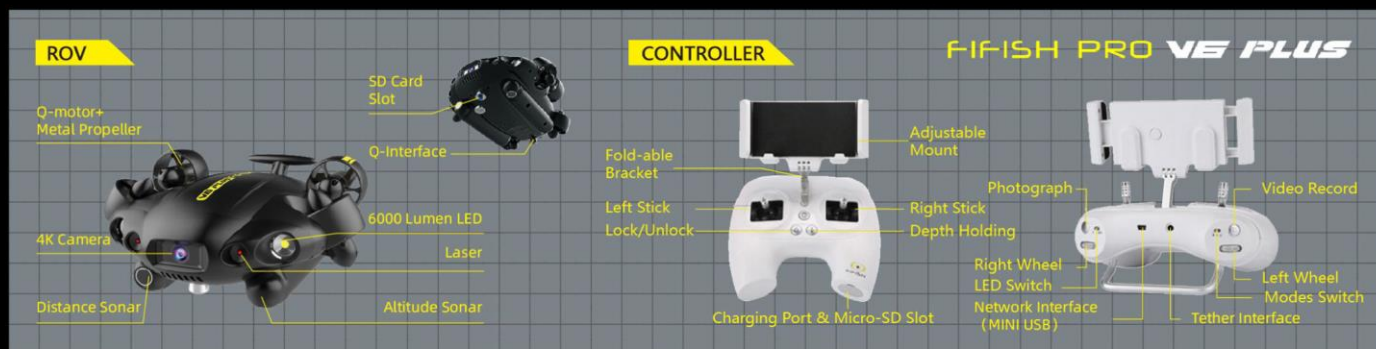
Size	140mm
Grip	10kgf
Supply Voltage	9~12V
Maximum Current	3A

## ■ LASER RULER

Laser Tube Type	Spot Laser
Wavelength	650nm (Red)
Scale Length	12cm

## ■ TETHER

Length	200m standard (100m/300m optional)
Breaking Force	120 kgf
Tether Diameter	4.0mm



UK DISTRIBUTOR

**mantsbrite**  
marine electronics

Tel: +44 (0)1621 853003  
[www.mantsbrite.com](http://www.mantsbrite.com)



SCAN FOR VIDEO